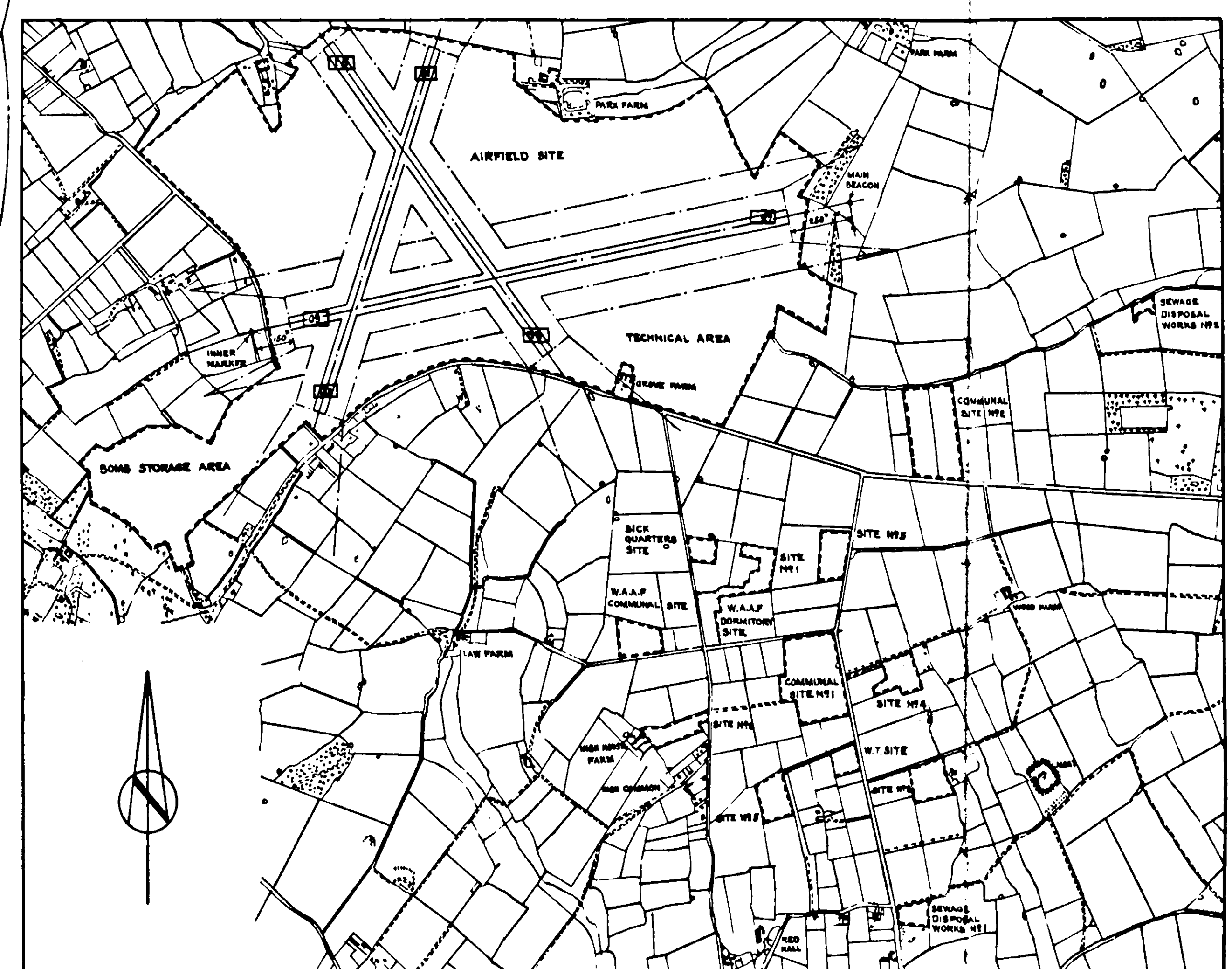
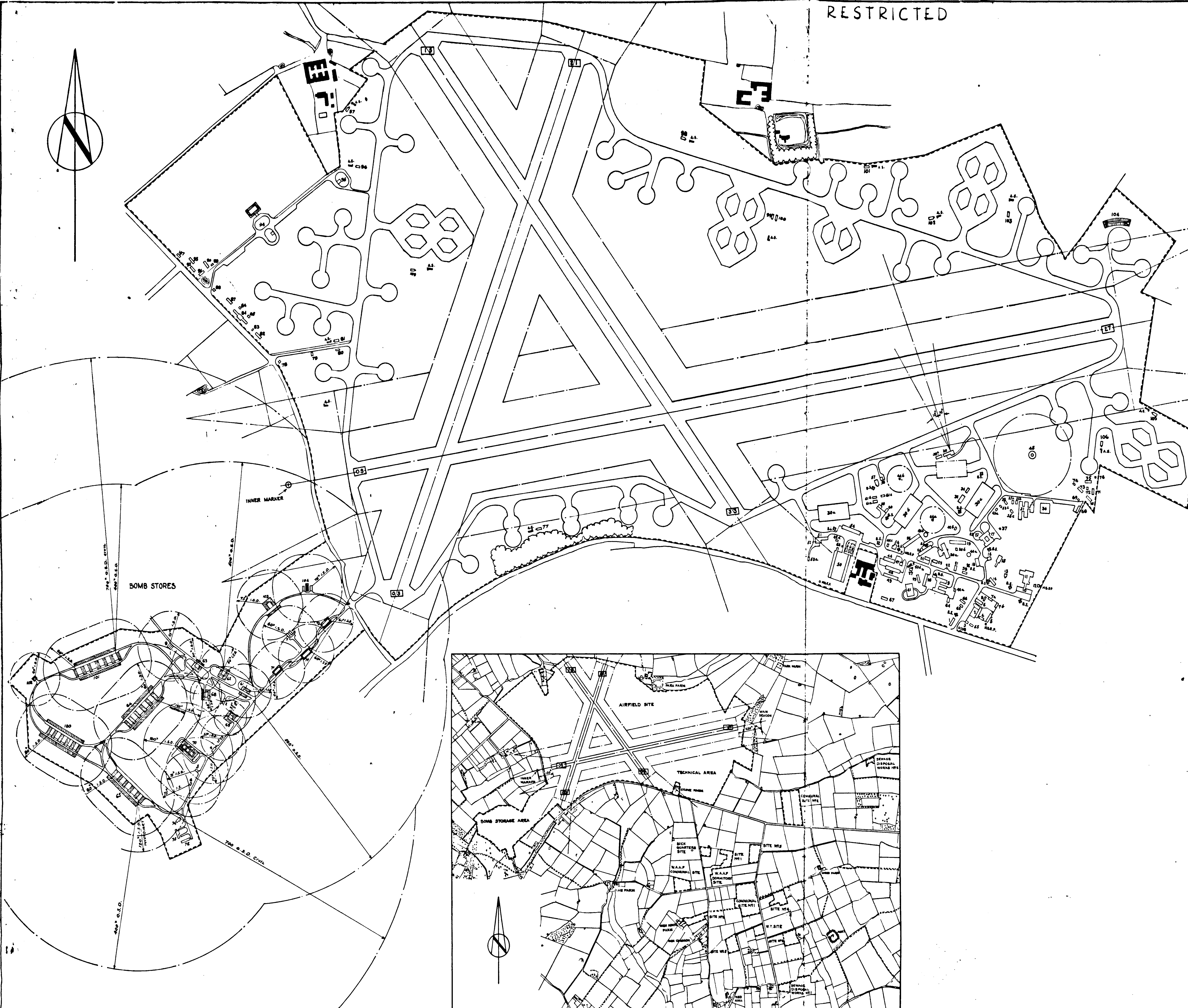
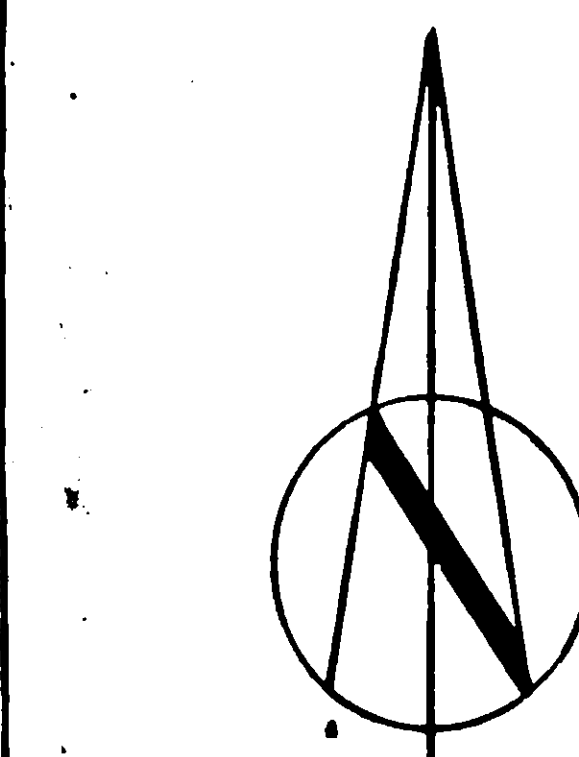


RESTRICTED

SCHEDULE OF BUILDINGS

BLDG#	BUILDING	CONST	DWG#	BLOG#	BUILDING	CONST	DWG#
1	AIRFIELD SITE				BOMB STORE		
2	WARD & FIRE PARTY HOUSE	T.B.	2247/41	1	PYRO STORES	N	1774/41
3	WORKS SERVICES BUILDING	T.B.	1018/41	2	GRENADE STORES	N	
4	STORES ANNEXE	T.B.	2247/41	3	PYRO STORES	N	
5	WORKSHOPS ETC HANDCRAFT TYPE HUT	A	W.1783	4	PYRO STORES	N	
6	WORKSHOPS ETC	T.B.	2015/41	5	ACCOMMODATION FOR PERSONNEL	N	
7	SENIOR WORKS OFFICER & UTILITIES	T.B.	2015/41	6	COMPONENT STORES	N	
8	CONTRACTORS OFFICES ETC	N	14420/41	7	INCENDIARY BOMB STORES	N	2416/40
9	UTILITIES STORES & WORKSHOP (U.S. CONST)	T.B.	14420/41	8	FUSED & SPARE BOMB STORE	N	3167/41
10	MAIN STORES	T.B.	2244/41	9	BOMB STORES	N	
11	STATION OFFICES	T.B.	2211/41	10	COMPONENT STORES	N	2284/40
12	OPERATIONS BLOCK	P.C.	1225/40	11	INCENDIARY BOMB & PYRO STORES	N	2244/40
13	SPEECH BROADCASTING BUILDING	R.C.	1078/41	12	FUELING POINT BUILDING	N	4778/41
14	A.M. BOMBING TEACHER	P.B.	1739/41	13	S.A.A. STORES (S. CHICLES)	N	4778/41
15	LINE TRAINER BUILDING (3 UNITS)	T.B.	2112/41	14	S.A.A. STORES (LUBRIC, L.P.W.O.)	N	1815/41
16	PHOTOGRAPHIC BLOCK	T.B.	2244/41	15	BOMB STORE	N	4778/41
17	TURRET INSTRUCTIONAL BUILDING	T.B.	1102/40	16	COMPONENT STORES	N	4778/41
18	MAIN WORKSHOPS	T.B.	2145/41	17	INCENDIARY BOMB STORES	N	2244/40
19	ARMOURY	T.B.	2252/41	18	FUELING POINT BUILDING	N	4778/41
20	CREW & REST ROOM	T.B.	2253/41	19	S.A.A. STORES (S. CHICLES)	N	4778/41
21	CREW LOCKER & DRYING ROOM	T.B.	1901/41	20	S.A.A. STORES (LUBRIC, L.P.W.O.)	N	1815/41
22	GAS DEFENCE CENTRE	T.B.	49/40	21	BOMB STORE	N	4778/41
23	BULK OIL INSTALLATION	T.B.	11270/41	22	COMPONENT STORES	N	4778/41
24	PARACHUTE STORE	T.B.	1744/39	23	INCENDIARY BOMB STORES	N	2244/40
25	DINGHY SHED	T.B.	1901/41	24	FUELING POINT BUILDING	N	4778/41
26	MAINTENANCE & ARMOURY UNIT (WITH OIL BOWSER)	T.B.	2153/41	25	S.A.A. STORES (S. CHICLES)	N	4778/41
27	MAINTENANCE UNIT	T.B.	2153/41	26	S.A.A. STORES (LUBRIC, L.P.W.O.)	N	1815/41
28	SUB STATION	T.B.	2153/41	27	BOMB STORE	N	4778/41
29	GAS CLOTHING & RESPIRATOR STORE	T.B.	2153/41	28	COMPONENT STORES	N	4778/41
30	AIRCRAFT SHED (T.B.)	T.B.	1240/41	29	INCENDIARY BOMB STORES	N	2244/40
31	CREW REST, LOCKER & DRYING ROOM	T.B.	2627/41	30			
32	SQUADRON & FLIGHT OFFICES	T.B.	2627/41	31			
33	SQUADRON OFFICE	T.B.	1847/41	32			
34	FLIGHT OFFICE	T.B.	2523/41	33			
35		T.B.	4786/41	34			
36		T.B.	1268/41	35			
37		T.B.	4785/41	36			
38		T.B.	2112/41	37			
39		T.B.	2523/41	38			
40		T.B.	2112/41	39			
41		T.B.	7211/42	40			
42		T.B.	2112/41	41			
43		T.B.	2112/41	42			
44		T.B.	2112/41	43			
45		T.B.	2112/41	44			
46		T.B.	2112/41	45			
47		T.B.	2112/41	46			
48		T.B.	2112/41	47			
49		T.B.	2112/41	48			
50		T.B.	2112/41	49			
51		T.B.	2112/41	50			
52		T.B.	2112/41	51			
53		T.B.	2112/41	52			
54		T.B.	2112/41	53			
55		T.B.	2112/41	54			
56		T.B.	2112/41	55			
57		T.B.	2112/41	56			
58		T.B.	2112/41	57			
59		T.B.	2112/41	58			
60		T.B.	2112/41	59			
61		T.B.	2112/41	60			
62		T.B.	2112/41	61			
63		T.B.	2112/41	62			
64		T.B.	2112/41	63			
65		T.B.	2112/41	64			
66		T.B.	2112/41	65			
67		T.B.	2112/41	66			
68		T.B.	2112/41	67			
69		T.B.	2112/41	68			
70		T.B.	2112/41	69			
71		T.B.	2112/41	70			
72		T.B.	2112/41	71			
73		T.B.	2112/41	72			
74		T.B.	2112/41	73			
75		T.B.	2112/41	74			
76		T.B.	2112/41	75			
77		T.B.	2112/41	76			
78		T.B.	2112/41	77			
79		T.B.	2112/41	78			
80		T.B.	2112/41	79			
81		T.B.	2112/41	80			
82		T.B.	2112/41	81			
83		T.B.	2112/41	82			
84		T.B.	2112/41	83			
85		T.B.	2112/41	84			
86		T.B.	2112/41	85			
87		T.B.	2112/41	86			
88		T.B.	2112/41	87			
89		T.B.	2112/41	88			
90		T.B.	2112/41	89			
91		T.B.	2112/41	90			
92		T.B.	2112/41	91			
93		T.B.	2112/41	92			
94		T.B.	2112/41	93			
95		T.B.	2112/41	94			
96		T.B.	2112/41	95			
97		T.B.	2112/41	96			
98		T.B.	2112/41	97			
99		T.B.	2112/41	98			
100		T.B.	2112/41	99			
101		T.B.	2112/41	100			
102		T.B.	2112/41	101			
103		T.B.	2112/41	102			
104		T.B.	2112/41	103			
105		T.B.	2112/41	104			
106		T.B.	2112/41	105			
107		T.B.	2112/41	106			
108		T.B.	2112/41	107			
109		T.B.	2112/41	108			
110		T.B.	2112/41	109			



SHIPDHAM

LOCATION PLAN

RESTRICTED

ABBREVIATIONS

TEMPORARY BRICK BUILDINGS INDICATED THIS	T.B.
TEMPORARY CONCRETE BUILDINGS	T.C.
PERMANENT BRICK BUILDINGS	P.B.
PERMANENT CONCRETE BUILDINGS	P.C.
STEEL BUILDING	ST
SECO HUTTING	S
NISSEN HUTTING	N
AIR RAID SHELTERS	A.S.
BLAST SHELTERS	B.S.
M.E. PLANT	M.E.P.
ASBESTOS HUTTING	A.S.P.
THORNE HUTTING	T
LAING HUTTING	L

**SHIPDHAM**  
**RECORD SITE PLAN**  
 AIRFIELD SITE  
 FOR DISPERSED SITES SEE DWG NO 1013/45  
 BASED ON N7 WORKS AREA DWGS NOS 1011/45, 1012/45, 1013/45, 1014/45, 1015/45, 1016/45, 1017/45, 1018/45, 1019/45, 1020/45

NOTE  
 THIS IS A SECRET DRAWING UNDER NO CIRCUMSTANCES MUST IT BE REPRODUCED. IT IS NOT TO BE SEEN BY UNAUTHORISED PERSONS. MUST BE KEPT UNDER LOCK AND KEY WHEN NOT IN USE AND ITS SAFE CUSTODY IS THE RESPONSIBILITY OF THE PERSON TO WHOM IT IS ISSUED.

SCALE: 1/8"=1'00'

FOR W.S. FOR D.O.W.

MARCH 1945

1012  
45

AIR MINISTRY

1012  
45

AIR MINISTRY